

# Monthly Goat Droppings

## PRESIDENT

Dori Lowell  
425-334-4509  
bizbombacr@aol.com

## VICE PRESIDENT

Julie Davis  
425-308-4456  
clearvalleyfarm@hotmail.com

## SECRETARY

Staci McStotts  
360-435-9520  
CriticsChoice@wavecable.com

## TREASURER

Colleen Wade  
360-724-0345  
bcwade@wavecable.com

## WEBMASTER

Randi Lamb  
425-280-2002  
randirickell@gmail.com

## NEWSLETTER EDITOR

Randi Lamb  
425-280-2002  
randirickell@gmail.com

## NPGA REGION ONE DIRECTORS

Joyce Hubbard  
Linda Shipley

## FIRESIDE CHAT WITH DORI

October 2014

Wow, the Frostbite show is almost here! I hope you are all going to be able to make it to the show. This is always my favorite EPGA show of the year. Sure it may be chilly, but put on a extra layer of clothes and mittens, and maybe ear muffs, and you are sure to have a good time. Do not forget we have a special raffle item donated by Amy Burt. Just think how nice it would be to have a fire in the backyard in your new fire pit! Don't forget to invite me for hotdogs and marshmallows!

Good news for those of you who show. EPGA has volunteered to help out CPGA to put on the December show in Silverdale this year. The show had been cancelled, but due to exhibitor demand, CPGA opted to take over the show for this year. EPGA is helping out financially to make this possible. I hope all of you will make a point of trying to make it to this show. The build-

ing the show and goat pens are located in is heated so no worry about being too cold, so don't let that be your excuse to miss it.

It is that time of the year again. We need to get nominations for 2015 club officers. Colleen Wade has another year as Treasurer, but President, VP, and Secretary are all open for nominations. Contact Michelle Wade with your nominations. You can email her at michelle.wade91@gmail.com

See you at the next meeting at Staci McStotts on the 18th of October at 6:00 pm for the Social hour!

- Dori



THE TATTOO LETTER  
FOR 2014 IS

E

THE NEXT EPGA MEETING WILL BE HELD AT THE HOME OF THE SWANNER FAMILY ON NOVEMBER 8, 2014 AT 5:00 WITH A 4:00 SOCIAL HOUR

435 Shannaron Ln.

Camano Island, WA 98282

# Meeting Minutes

SEPTEMBER 2014

## **September 13, 2014** **EPGA Minutes**

Attending: Colleen Wade, Paul and Robin Swanner, Dori Lowell, Staci McStotts, Amy & Mike Burt, Julie Davis, Ted Smith, Randi Lamb and Guest Trevor.

7:45 pm Meeting called to order  
Julie approved June Minutes and Staci second...All in favor  
Treasury report reviewed

### **OLD BUSINESS:** October Show reviewed

October Show chair: Amy Burt and Joyce chairing

May need someone to do program pending surgery date for Staci... Colleen and Michelle volunteered

Call Mary to clean barn

Need someone to take care of judges ... Paul Swanner volunteered

Discuss travel for judges

Need to get entries in the mail

Need shirt order form out to facebook, webpage etc...

Kevin Kress first judge and Erin McCarthy second judge

Get raffle tickets to sell from Amy Burt for Fire Pit

Verify chairs are ready

May need someone to handle showmanship competition pending Staci surgery

# Meeting Minutes

CONTINUED

Don't forget your premise Id - Contact: David for your USDA premise ID stuff.  
360-725-5493

June show will be the same next year. Joyce has gotten 2 judges for show.  
Tammy Josephson and April Seiler

Need Chair for March and October show ... Amy Burt will chair June Show

**NEW BUSINESS:**

Quilt donated by Saulsbury's for the October show....Send thank you card...

Michelle Wade is nominations chair. Please email nominations to Michelle at  
michelle.wade91@gmail.com

Send Showmanship totals to Joyce pending Staci availability

Revisit rules on showmanship challenge

Next meeting is: October 18th at McStotts home - 6:00 Social hour and 7:00  
meeting

Colleen moved to adjourn meeting and Julie Second  
Meeting adjourned 8:38 pm

# Announcements

October 2014

## **NPGA REGION I MEMBERS**

The most recent updates regarding the NPGA lawsuit have been posted on the NPGA website. The link to the updates is on the Home Page. Click on the link and scroll down to the end of the list of updates. The most recent ones are dated:

### **UPDATE 9/25/14**

Regarding the status of the E.N.E. (Early Neutral Evaluation) Hearing which was held in San Diego on September 12, 2014.

### **UPDATE 10/4/14**

The Plaintiff's INITIAL DISCLOSURE dated 9/11/14 is posted. The Disclosure document details the specifics of the Plaintiff's claims and reveals the dollar amounts the Plaintiffs are demanding from NPGA.

### **UPDATE 10/6/14**

Notifies the NPGA membership that as a result of the lawsuit, our Insurance Company has refused to renew our D&O liability insurance policy. We are in the process of obtaining quotes to replace the policy. In the past, the policy premium has cost NPGA approximately \$1,000 per year, however due to the pending lawsuit, the premium quotes thus far have increased ten times to \$10,000 per year.

Please take the time to review the updates in full.

Linda Shipley, Director Region I

# Announcements

October 2014

**JUDGE CHANGE FOR FROSBITE CLASSIC:**

Scott Colwell is now the judge for Saturday, October 25.

# Frostbite Joblist

Debbie is getting straw and fair grounds

Joyce and Amy Burt have vet check and check in. Need one other person for check in on both Friday and Saturday please!

Staci is doing program& show entries

Dori has pen assignment

Julie has decorations

Gwen is show table secretary

Cheryl is doing donuts for sat & Sunday

Debbie is doing coffee set up and clean up

Paul is handing out ribbons and in charge of judge drinks

Colleen is doing memo prep and reservations for judges

Mary is cleaning pens

Cheryl and Nancy are doing raffle

Robin is the photographer

Joyce is in charge of t-shirts

Ring Steward is Paul on Saturday , and Mike Burt Sunday

Looking for help with cleaning up on Sunday!



## SHOW RESULTS

CPGA does the WSF -

Res Jr Ch Doe - Country Critters Fashion Icon (April Seiler)

Sr Ch / Res Gr Ch Doe - Country Critters A Flawless Design (April Seiler)

WSF -

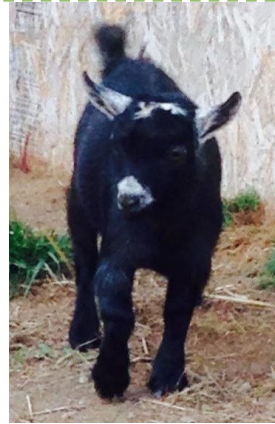
Res Sr / Res Gr Doe - Country Critters A Flawless Design (Sarah Pierce-White)

ResJrCh - Country Critters BraiDance - (Sarah Pierce-White)

Submitted by Karen Crawford

## For Sale

Amy Burt has a few show does for sale.  
\$200-250. She also has a very nice buckling,  
B-S Acres Slate available for \$150. May baby.  
He will be at the show.



## New Arrivals

Country Critters — New Arrival 9/8 -  
Single Buck - Sire: Fairview Alert the Public /  
Dam: Country Critters IDT Cora Gray

Little Treasures — New Arrival 10/3-  
Twin Does - Sire: RNJ's Kids Hampton /  
Dam: Dogwood Acres Cleopatra (pictured)



# Extra, extra!

## Helpful Websites

### **INFORMATIONAL:**

<http://fiascofarm.com/>

<http://www.goatworld.com/articles/>

<http://www.tennesseemeatgoats.com/articles2/articlesMain.html>

<http://kinne.net/articles.htm>

### **PRODUCT:**

<http://www.enasco.com/action/default>

<http://jefferslivestock.com/>

<http://hoeggerfarmyard.com/xcart/>

<http://www.caprinesupply.com/>

<http://www.valleyvet.com/>

<http://goatsupplies.netfirms.com/>

<http://www.kvsupply.com/>

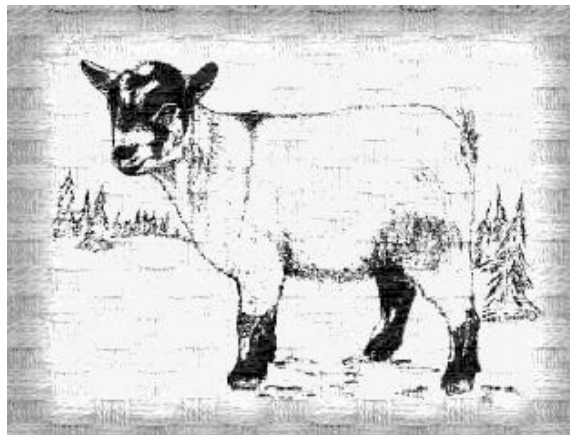
<http://www.americanlivestock.com/>

<http://www.chicksaddlery.com/>

<http://www.wigginsinc.com/>

<http://www.npga-merch.com>

## WE'RE ON THE WEB!



[HTTP://EVERGREENPYGMYGOATASSOCIATION.COM](http://evergreenpygmygoatassociation.com)



# DIRECTIONS

435 Shannaron Ln.

Camano Island, WA 98282

Please take exit 212 and travel West towards Camano Island

Drive through Stanwood and go over the bridge onto the Island.

When the road “Y”s, stay to the LEFT(North Camano Dr.)

Stay on this road for 8 miles...As soon as you see the Elger bay grocery you turn

Left .5mi (half mile) on Shannaron. First driveway on left.