

# Monthly Goat Droppings

**PRESIDENT**

Dori Lowell  
425-334-4509  
bizbombacr@aol.com

**VICE PRESIDENT**

Julie Davis  
425-308-4456  
clearvalleyfarm@hotmail.com

**SECRETARY**

Staci McStotts  
360-435-9520  
CriticsChoice@wavecable.com

**TREASURER**

Colleen Wade  
360-724-0345  
bcwade@wavecable.com

**WEBMASTER**

Randi Lamb  
425-280-2002  
randirickell@gmail.com

**NEWSLETTER EDITOR**

Randi Lamb  
425-280-2002  
randirickell@gmail.com

**NPGA REGION ONE DIRECTORS**

Joyce Hubbard  
Linda Shipley

## FIRESIDE CHAT WITH DORI

December 2014

Merry Christmas Everyone! Our fiscal year is almost over and new Officer's will take over the club on January 1. Due to the fact that there was only one person running for each position, we will not need to have an "election" at the December meeting this year.

Your new officer's for 2015 will be

**Julie Davis as President**

**Dori Lowell as Vice President**

**Nancy Shurvinton as Secretary**

**John Ireton as Newsletter Editor**

**Melissa Carden as Webmaster**

We don't typically conduct any club business at the December meeting, but instead just enjoy the Dinner and Gift Exchange. If you have any issues you want to bring up let your new President know before the January meeting.

Thank you all for your support and input during the last year. I enjoyed being your president and expect Julie will do a great job for you in 2015.

- Dori



## THE EPGA CHRISTMAS PARTY WILL BE HELD AT THE HOME OF THE LOWELL FAMILY ON DECEMBER 13, 2014 AT 5:00PM

1932 149th Ave S.E. Snohomish, WA 98290 425-334-4509

THE TATTOO LETTER FOR 2014 IS

**E**

# Meeting Minutes

November 2014

**November 8th, 2014**

## **EPGA Minutes**

Attending: Paul and Robin Swanner, Staci McStotts, Amy Burt, Haily Burt, John and Brandi Ireton, Joyce Hubbard, Debbie Bond, Dori Lowell, Colleen Wade

5:20 pm Meeting called to order

Colleen approved October Minutes and John second... All in favor Treasury report for October and November reviewed

## **OLD BUSINESS:**

Review profit and loss of October show

The show went well

Discussed breeding etiquette at goat shows. Be aware of your surroundings. Suggested Paul write an article for MEMO.

Discussed ways to cut costs and change it up a bit. Think of ways to make money

Send ideas to newsletter and president

Melissa and Julie will chair the March show

Colleen will Chair the June show

Amy Burt and Robin will chair the October show

Colleen will sanction all shows

## **NEW BUSINESS**

Judges all contacted:

Thank you Joyce. March show.... Sharon Perry

June Show – Tammi Josephson & April Seiler

October Show – Karen Shae-Hepner & David Wortham

Update on December show:

Pens are \$10.00 if you bring your own bedding and \$15.00 if they supply bedding If you can clean your pens it would be appreciated & the barn may not be heated

# Meeting Minutes

November 2014

Discussion on Showmanship Challenge:

Robin and Amy will work on rules and bring to January meeting. If you have any input please contact them.

E.P.G.A. Facebook page:

Staci to send out an email of the Secret page. A page on facebook to exchange information, ideas, see pictures from our shows, minutes. Please, as members, use this page to its fullest. Upload pictures, files, events ewtc.etc. In order to be a member on the facebook page you must be a member of E.P.G.A.

Reminder:

Christmas Party is at the Lowell  
home

December 13<sup>th</sup> @ 5:00

Club buys the Ham for the potluck

Far people bring cold foods

Close people bring hot foods

\$15.00 spending limit on gift ex-  
change

Future Meetings:

January 10<sup>th</sup> – Amy Burts – 6:00 Social and  
7:00 meeting

Feb 15<sup>th</sup> – Debbie Bond – 3:00 Social and  
4:00 meeting

March 14<sup>th</sup> – Staci McStotts 5:00 Social  
and 6:00 meeting

Reminder to pay your dues by Jan-  
uary 1<sup>st</sup>, 2015 Staci move to ad-  
journ and Paul second – 7:12 pm

# A Letter from Smucket

Hi everyone,

I told you last time that I would tell you about our puppy Brodie. He is part Cavalier King Charles Spaniel and part Poodle. He was tiny when he came here so we ran away everytime he ran at us. Then he'd stop and stare at us like he wondered why we were running away, and not chasing him. Now when he comes outside he licks each of us. I guess that how dogs show affection which is both cute and discusting at the same time. He and Trevor run around in circles chasing each other. Renegade really wants to join in. He stands there and watches and makes these steps toward them like he's trying to jump in. Then he looks at Melanie with this puzzled look on his face. It's hard when two cutures can't communicate.

I've discovered a new game. When Melanie starts toward the back door on the deck I run and stand right by the door. As she opens it I stick my head in so that she can't close it and dart into the house. Sometimes one more can sneak in after me. Then Melanire and I race to the laundry room to the container of peanuts. Sometimes I make it before she gets there and sometimes she gets there first. However, we always get more peants to get me back into the gargage.

I had another outling last week. The garage door went up when Melanie just drove into the driveway. There is now a little fence across the gargage door since this happened the last time. We're standing there greeting Melanie when she got out of the car, yelling, "No, No!" She ran around through the house out to the garage. In the meantime I discovered that the closure of the fence was not tight so I squeezed out into the driveway. All this time Melanie was yelling words that started with ffff and sssshhhh, but I wandered out into the driveway. Melanie got the closure re-hooked before Birdie could follow me. I then realized that it was dark and scary and wanted back in, but couldn't get in. Plus when she tried to close the door I was in the way and it wouldn't close. So Melanie opened the side gate in the fence around the yard to get me back in that way. I got to the gate but decided that I should go visit Maddie the dog next door since she's always talking to us through the fence.. Melanie started yelling those word again and pushed me through the gate. The gargage door was still not down so she pushed us boys into the house. Birdie was in the yard, and when she came around into the gargage and saw us going into the house without her she was not happy. Melanie finally got the door closed and joined us in the house. She was really pale and breathing really hard. However, we were having a nioe, relaxing snack of peanuts in the laundry room. I looked at her, "You ok? Want a peanut?"

We had a quite a bit of snow which covered our leaf snacks. Plus there was snow on the deck. Birdie wouldn't go up there. She sent me up to check it out first. The snow is gone now so we're back to leaf snacks.

Until next time have a good holiday and stay warm.

Love  
Smucket



## Show Results

### Recent Show Wins at Bizbomb Acres

#### **Frostbite Classic**

Bizbomb Acres Kerri O'Reilly

1st Show Jr. Champion/ Reserve Grand Champ

2nd show Rs Jr. Champ

Bizbomb Acres Tyrone O'Shannon

2nd show Reserve Best Wether

#### **Dasher, Dancer, Prancer & Pygmies Show**

Bizbomb Acres Higgins O'Leary

1st show & 3rd show Rs. Jr Champ Buck

Bizbomb Acres Kay Donovan

1st show Jr. Champ Doe

2nd show Rs Jr. Champ Doe

PGCH Bizbomb Acres Honor O'Doul

3rd show Master Champion

# Extra, extra!

## Helpful Websites

### **INFORMATIONAL:**

<http://fiascofarm.com/>

<http://www.goatworld.com/articles/>

<http://www.tennesseeatgoats.com/articles2/articlesMain.html>

<http://kinne.net/articles.htm>

### **PRODUCT:**

<http://www.enasco.com/action/default>

<http://jefferslivestock.com/>

<http://hoeggerfarmyard.com/xcart/>

<http://www.caprinesupply.com/>

<http://www.valleyvet.com/>

<http://goatsupplies.netfirms.com/>

<http://www.kvsupply.com/>

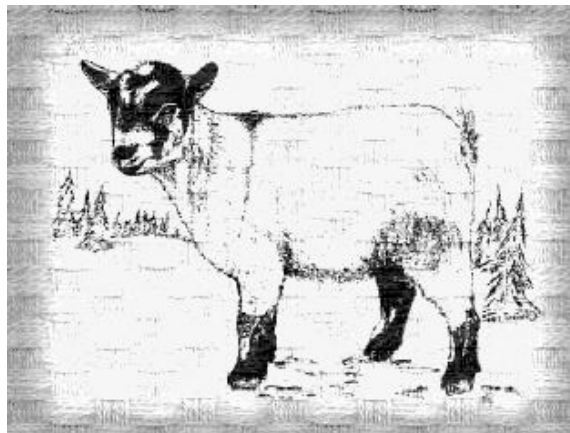
<http://www.americanlivestock.com/>

<http://www.chicksaddlery.com/>

<http://www.wigginsinc.com/>

<http://www.npga-merch.com>

## WE'RE ON THE WEB!



[HTTP://EVERGREENPYGMYGOATASSOCIATION.COM](http://evergreenpygmygoatassociation.com)

# DIRECTIONS

1932 149th Ave S.E.

Snohomish, WA 98290

425-334-4509

- Merge onto US-2 E via EXIT 194 toward Wenatchee/Snohomish 5.1 mi
- Take the WA-9 exit toward Arlington / Bothell 0.2 mi
- Turn left onto WA-9 0.2 mi
- Take the 1st right onto New Bunk Foss Rd 1.2 mi
- New Bunk Foss Rd becomes Ritchey Rd 0.3 mi
- Turn left onto S Machias Rd. 1.0 mi
- Turn right onto Dubuque Rd 0.3 mi
- Take the 3rd left onto 38th St SE. 0.4 mi
- 38th St SE becomes 132nd Ave SE. 0.7 mi
- Turn right onto 27th St SE. 0.3 mi
- Take the 1st left onto 139th Ave SE 0.2 mi
- 139th Ave SE becomes 23rd Pl SE 0.4 mi
- 23rd Pl SE becomes 145th Ave SE 0.2 mi
- Turn right onto 21st St SE 0.2 mi
- Turn left onto 149th Ave SE 0.09 mi
- 1932 149TH AVE SE is on the left